



Laying *the* Foundation

- INCIDENCE OF TRAUMA

During a child’s first five years, Ohio has a critical opportunity to lay a strong foundation for the state's most-at risk children by investing in enriching early experiences. Quality early childhood programs have the ability to close gaps between at-risk kids and their more advantaged peers by the time they enter Kindergarten. Identifying barriers to children’s success and providing interventions must happen in the first five years of life to give all children the best shot at reaching their full potential. Children in Ohio are facing unimaginable levels of trauma and adversity before they even enter school. Ohio must do better to reach families and children through quality home visiting, child care and preschool programs. In order to improve kindergarten readiness and lifelong success for Ohio kids, the state needs to ensure early development is happening in high-quality learning environments.



Incidence of Trauma

Adverse Childhood Experiences (ACEs) are traumatic events that have the potential to cause long-lasting negative effects.

During the earliest and most critical years of development, children are highly vulnerable to adversity. As the frequency and length of ACEs increase, so do the impacts on physical and mental health, academic achievement, and self-sufficiency. Ohio ranks 46th in the nation for kids having three or more ACEs, putting them at higher risk for long-lasting negative effects.

What constitutes an ACE?

The Adverse Childhood Experiences Study conducted in 1995 outlined ten ACEs that predict negative outcomes later in life. Today, these have been adapted to create the ACE test—an eight question survey to determine the number of significant adversities a child has experienced. The commonly accepted questions on the ACE test ask whether a child has ever:

- 1. Lived with a parent or guardian who became divorced or separated
- 2. Lived with a parent or guardian who died
- 3. Lived with a parent or guardian who served time in jail or prison
- 4. Lived with anyone who was mentally ill or suicidal, or severely depressed for more than a couple of weeks
- 5. Lived with anyone who had a problem with alcohol or drugs
- 6. Witnessed a parent, guardian, or other adult in the household behaving violently toward another
- 7. Been the victim of violence or witnessed any violence in his or her neighborhood
- 8. Experienced economic hardship “somewhat often” or “very often” (i.e., the family found it hard to cover costs of food and housing)

49% OF OHIO KIDS HAVE HAD AT LEAST ONE ACE.



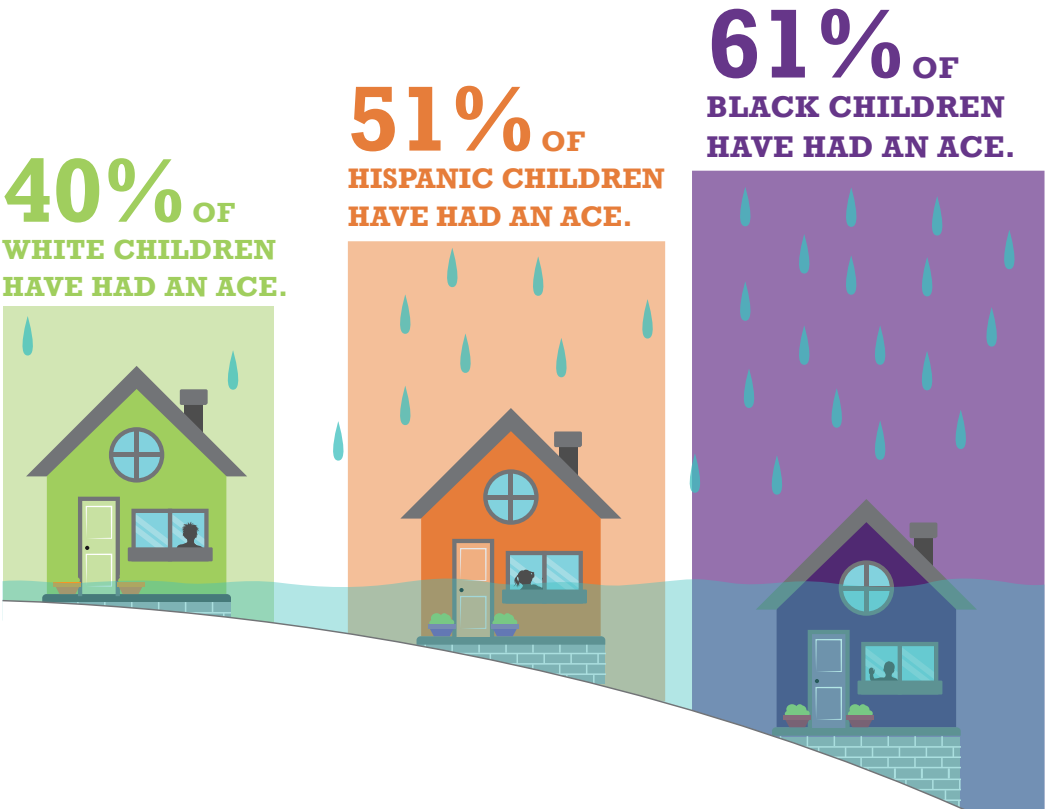
1 in 7 Ohio kids has had THREE or MORE Adverse Childhood Experiences, putting them at much higher risk for long-term negative effects.

Ohio ranks 46TH in the NATION for kids experiencing childhood trauma.

Incidence of Trauma

Risk of Adverse Childhood Experiences in the United States by Race/Ethnicity

Almost half of all children in the United States have had at least one ACE, but black and Hispanic children are at much higher risk than their white peers.



Reflections

WHAT ARE THE LONG-TERM IMPACTS OF THIS KIND OF TRAUMA?

EXPERIENCES DURING THE FIRST SEVERAL YEARS OF LIFE SHAPE WHO A CHILD BECOMES. ADVERSE CHILDHOOD EXPERIENCES HAVE THE POTENTIAL TO IMPACT LONG-TERM MENTAL HEALTH, PHYSICAL HEALTH, AND BEHAVIOR—INCLUDING SMOKING, ALCOHOLISM, DRUG USE, MISSED WORK, DEPRESSION, SUICIDE ATTEMPTS, HEART DISEASE, DIABETES, SEVERE OBESITY, CANCER, AND STROKE. ON AVERAGE, PEOPLE WITH SIX OR MORE ADVERSE CHILDHOOD EXPERIENCES HAVE A LIFE EXPECTANCY OF 60 YEARS, WHICH IS SIGNIFICANTLY SHORTER THAN THE 80 YEAR LIFE EXPECTANCY FOR PEOPLE WITH NO ACEs.

Incidence of Trauma:

SOURCES

Child Trends. The prevalence of adverse childhood experiences, nationally, by state, and by race or ethnicity. (2018)

Centers for Disease Control and Prevention, Kaiser Permanente. Adverse Childhood Experiences (ACE) Study. (1997)

Veto Violence.
Adverse Childhood Experiences Snapshot.



Join Us.

Groundwork
OHIO



Ohio Early Childhood Race & Rural Equity Report

GroundworkOhio.org

 
@GroundworkOhio

SHANNON JONES
Executive Director
SJones@GroundworkOhio.org

LYNANNE GUTIERREZ
Policy Director & Legal Counsel
LWolf@GroundworkOhio.org

JULIA HOHNER
Communications & Policy Associate
JHohner@GroundworkOhio.org

172 E. State Street, Suite 400 • Columbus, Ohio 43215
Groundwork Ohio is a fiscally-sponsored project of Community Initiatives